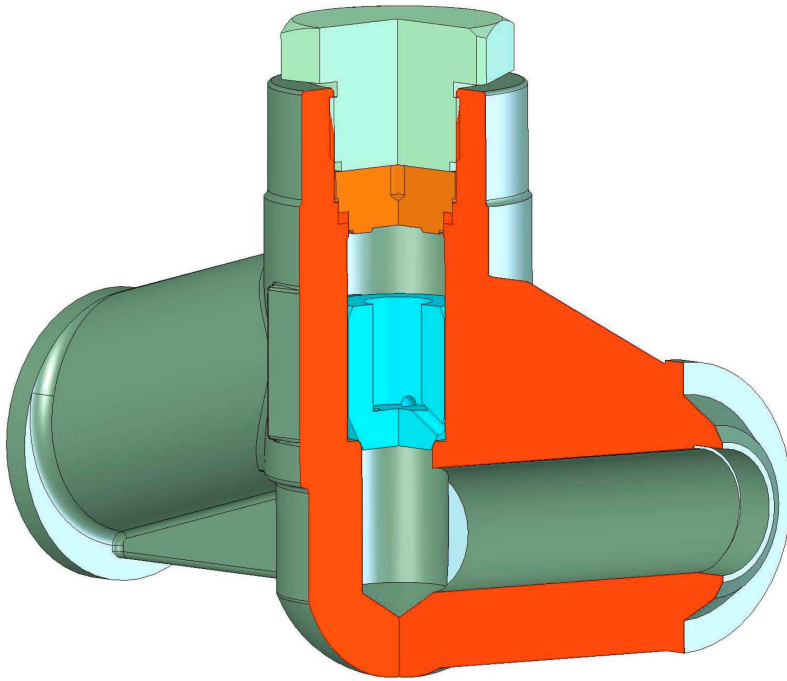


HIGH PRESSURE CHECK VALVE

PN160 - PN630



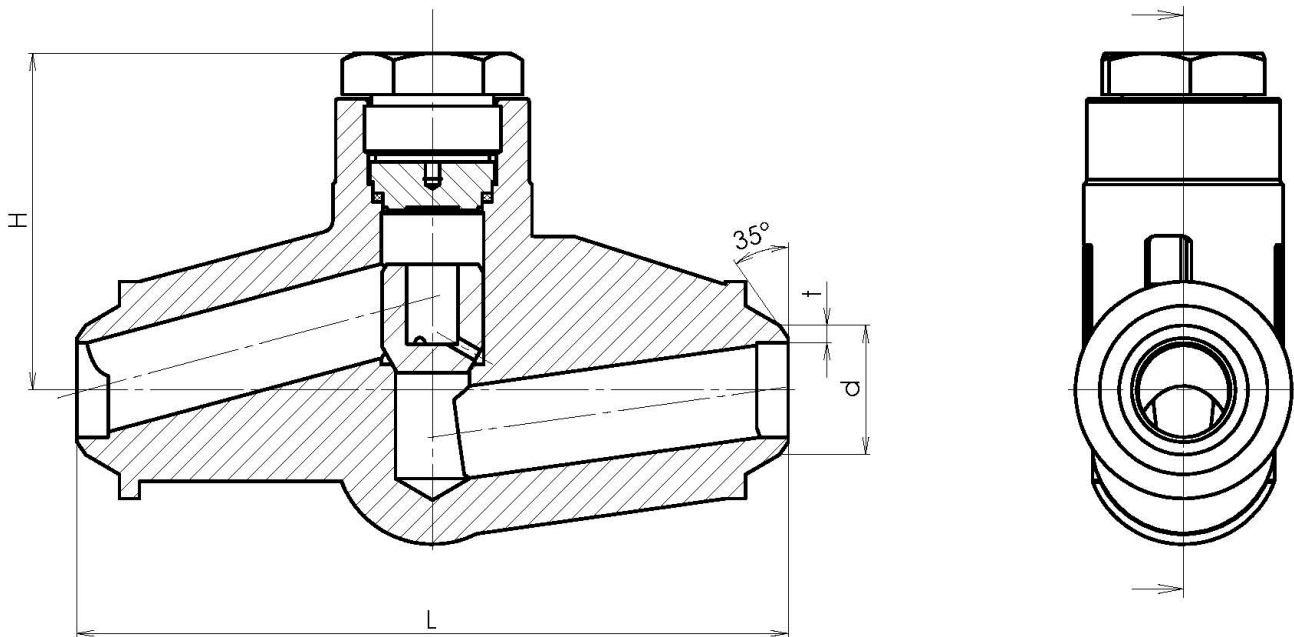
TYPE	CHZ15
Nominal pressure	PN160 - PN630
Nominal size	DN10 - DN50

Compact design
Forged steel body
Hard facing disc and seat
Variable connection

Operation	
7	Automatic function

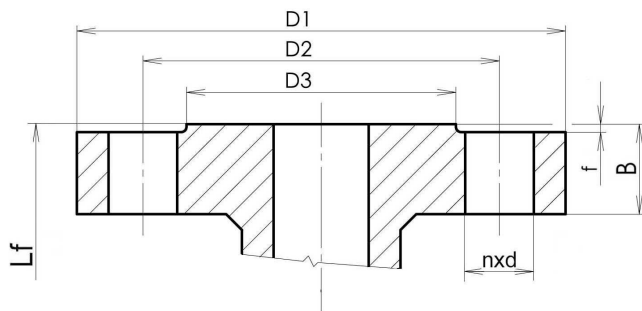
Flanges	EN 1092-1 GOST 9399
Socket weld end	DIN3239-2
Welding end	DIN 3239-1
Face-to-face	BY MFR
Testing	EN 12266-1
Pressure/Temperature	EN 12516-1

Main Parts		Material				
		-29 - +450 °C	-20 - +530 °C	-20 - +580 °C	-20 - +620 °C	-70 - +550 °C
		Carbon steel	Alloy steel		Spec. alloy steel P91	Stainless steel
		DIN (Wnr)	DIN (Wnr)	DIN (Wnr)	DIN (Wnr)	DIN (Wnr)
1	Body	C 22.8 (1.0460)	16Mo3 (1.5415)	11CrMo4-5 (1.7335)	X10CrMoVNb9-1(1.4903)	X6CrNiTi18-10 (1.4571)
2	Disc	X20Cr13(420,.1.4021)	X20CrMoV12-1(1.4922) + stellit	X20CrMoV12-1(1.4922) + stellit	X20CrMoV12-1(1.4922) + stellit	X20CrMoV12-1(1.4922) + stellit
3	Seat	weld-on 13 Cr / Stellite	weld-on Stellite	weld-on Stellite	weld-on Stellite	weld-on Stellite
4	Cover	C 22.8 (1.0460)	16Mo3 (1.5415)	14MoV6-3 (1.7715)	14MoV6-3 (1.7715)	X6CrNiTi18-10 (1.4571)
5	Pin	C 22.8 (1.0460)	14MoV6-3 (1.7715)	14MoV6-3 (1.7715)	14MoV6-3 (1.7715)	X6CrNiTi18-10 (1.4571)
6	Spring	X10CrNi18-8 (1.4310)	X10CrNi18-8 (1.4310)	X10CrNi18-8 (1.4310)	X10CrNi18-8 (1.4310)	X10CrNi18-8 (1.4310)
Material (1.7335, 1.4404..) and others upon request						



DN	10	15	20	25	32	40	50
d (PN)	22 (160-320) 28 (400) 34 (630)	22 (160-320) 28 (400) 34 (630)	28 (160-320) 34 (400-630)	35 (160-320) 44 (400) 49 (630)	44 (160-320) 49 (400-630)	49 (160-320) 61 (400) 77 (630)	61 (160-250) 77 (320-400)
t	According to pipe dimensions (DIN3239, B16.11)						
dmax	34	34	49	49	83	83	83
H	80	80	98	98	120	120	120
Travel	14	14	18	18	24	24	24
L	150	150	160	160	250	250	250

Other dimensions on request



PN160						
DN	D1	D2	D3	Bxf	nxd	Lf
15	130	75	45	20x2	4x14	230
20	135	90	58	24x2	4x18	260
25	150	100	68	24x2	4x18	260
32	165	110	78	26x2	4x22	260
40	185	125	88	28x3	4x22	260
50	200	145	102	30x3	4x26	300

PN250						
DN	D1	D2	D3	Bxf	nxd	Lf
15	130	90	45	26x2	4x18	230
20	135	95	58	26x2	4x18	260
25	150	105	68	28x2	4x22	260
32	165	120	78	32x2	4x22	390
40	185	135	88	34x3	4x26	390
50	200	150	102	38x3	8x26	390

PN320						
DN	D1	D2	D3	Bxf	Nxd	Lf
15	130	90	45	26x2	4x18	230
20	150	105	58	30x2	4x22	260
25	160	115	68	34x2	4x22	260
32	180	130	78	36x2	4x26	390
40	195	145	88	38x3	4x26	390
50	210	160	102	42x3	8x26	390

Pressure - temperature ratings

Material	Maximum working pressure (bar)								
	PN/T(°C)	250	280	300	350	380	400	430	450
C22.8/ 1.0460	160	138	131	121	104	91,3	83,9	72,9	69
	250	172	163	147	137	128	123	102	87
	320	286	280	273	237	213	182	151	133
	400	360	380	320	250	250	225	205	186
	500	460	430	380	290	270	250	235	195

Material	Maximum working pressure (bar)									
	PN/T(°C)	250	300	350	400	450	470	490	500	530
16Mo3/ 1.5415	160	160	142	133	125	120	118	97,5	77,7	39,3
	250	250	250	236	222	215	211	162	129	65,2
	320	320	320	318	298	288	283	218	179	86
	400	400	400	385	360	336	320	280	232	103
	500	500	500	480	450	420	400	350	290	110
	630	630	530	490	460	410	400	350	320	135

Material	Maximum working pressure (bar)														
	PN/T(°C)	250	300	350	400	450	470	490	510	530	540	550	560	570	580
14MoV63/ 1.7715	160	143	128	102	102	102	102	102	102	102	102	102	80	80	80
	250	224	200	160	160	160	160	160	160	160	160	160	125	125	125
	320	287	256	205	205	205	205	205	205	205	205	205	205	160	160
	400	358	320	256	256	256	256	256	256	256	256	256	200	200	200
	500	450	400	320	320	320	320	320	320	320	320	320	250	250	250
	630	550	490	440	440	440	440	440	440	440	390	390	360	360	340

Material	Maximum working pressure (bar)													
	PN/T(°C)	250	300	350	400	450	470	490	500	510	520	530	540	550
13 CrMo4-5/ 1.7335	160	160	152	150	148	144	140	133	128	102	83	68,8	53,8	43,2
	250	250	237	233	228	225	220	208	200	160	130	108	84	67,5
	320	320	314	298	392	288	281	266	256	205	166	138	108	86,4
	400	400	392	373	365	360	351	332	320	256	208	172	134	108
	500	500	500	480	460	450	439	415	400	320	260	215	168	135
	630	630	630	590	570	553	530	512	480	452	380	335	240	195

Material	Maximum working pressure (bar)														
	PNIT(°C)	450	470	490	510	530	540	550	560	570	580	590	600	610	620
P91/ 1.4903	160	150	150	132	132	132	102	102	102	102	80	80	80	64	58
	250	245	245	190	190	190	160	160	160	160	125	125	125	98	65
	320	314	314	280	280	280	205	205	205	205	205	160	160	135	110
	400	380	380	350	350	350	256	256	256	256	200	200	200	150	132
	500	470	470	425	425	425	380	360	320	320	250	250	250	230	195
	630	580	580	530	530	530	496	430	390	390	360	360	340	280	223

Material	Maximum working pressure (bar)														
	PNIT(°C)	250	300	350	400	450	470	490	500	510	520	530	540	550	
X6CrNiTi18-10/ 1.4571	160	135	126	121	116	113	127	118	110	108	105	102	100	96	
	250	215	197	189	181	177	175	170	166	164	160	158	154	152	
	320	270	252	242	232	225	220	218	210	205	203	200	198	195	
	400	338	316	302	289	285	280	273	266	261	258	253	249	243	